

MONA OFFSHORE WIND PROJECT

Annex 7.11 to the Applicant's response to the Procedural Deadline

Figure updates to address inconsistency between Onshore Works Plan and Environmental Statement figures – (Volume 7 – Part 8)

Deadline: Procedural Deadline

Application Reference: EN01037

Document Number: MOCNS-J3303-RPS-10243

Document Reference: S_PD_7.11

25 June 2024

F01



Image of an offshore wind farm

MONA OFFSHORE WIND PROJECT

Document status

Version	Purpose of document	Authored by	Reviewed by	Approved by	Review date
F01	Examination – Procedural Deadline	RPS	Mona Offshore Wind Ltd.	Mona Offshore Wind Ltd.	June 2024

Prepared by:

RPS

Prepared for:

Mona Offshore Wind Ltd.

Contents

1	FIGURE UPDATES TO ADDRESS INCONSISTENCY BETWEEN ONSHORE WORKS PLAN AND ENVIRONMENTAL STATEMENT FIGURES	1
1.1	Introduction	1
1.2	Response.....	1

Figures

Figure 1.1:	Figure A.1 of Volume 7, Annex 6.2: Landscape and seascape character baseline technical report Part 1 (APP-153).	2
Figure 1.2:	Figure B.1 of Volume 7, Annex 6.2: Landscape and seascape character baseline technical report Part 1 (APP-153).	3
Figure 1.3:	Figure B.2 of Volume 7, Annex 6.2: Landscape and seascape character baseline technical report Part 1 (APP-153).	4
Figure 1.4:	Figure B.3 of Volume 7, Annex 6.2: Landscape and seascape character baseline technical report Part 1 (APP-153).	5
Figure 1.5:	Figure B.4 of Volume 7, Annex 6.2: Landscape and seascape character baseline technical report Part 1 (APP-153).	6
Figure 1.6:	Figure B.5 of Volume 7, Annex 6.2: Landscape and seascape character baseline technical report Part 1 (APP-153).	7
Figure 1.7:	Figure B.6 of Volume 7, Annex 6.2: Landscape and seascape character baseline technical report Part 1 (APP-153).	8
Figure 1.8:	Figure B.7 of Volume 7, Annex 6.2: Landscape and seascape character baseline technical report Part 1 (APP-153).	9
Figure 1.9:	Figure B.8 of Volume 7, Annex 6.2: Landscape and seascape character baseline technical report Part 1 (APP-153).	10
Figure 1.10:	Figure B.9 of Volume 7, Annex 6.2: Landscape and seascape character baseline technical report Part 1 (APP-153).	11
Figure 1.11:	Figure C.1 Volume 7, Annex 6.2: Landscape and seascape character baseline technical report Part 2 (APP-154).	12
Figure 1.12:	Figures C1a - C1c Volume 7, Annex 6.2: Landscape and seascape character baseline technical report Part 2 (APP-154).	13
Figure 1.13:	Figure C2a - C2c Volume 7, Annex 6.2: Landscape and seascape character baseline technical report Part 2 (APP-154).	14
Figure 1.14:	Figure C3a - C3c Volume 7, Annex 6.2: Landscape and seascape character baseline technical report Part 2 (APP-154).	15
Figure 1.15:	Figure C4a - C4c Volume 7, Annex 6.2: Landscape and seascape character baseline technical report Part 2 (APP-154).	16
Figure 1.16:	Figure C5a - C5c Volume 7, Annex 6.2: Landscape and seascape character baseline technical report Part 2 (APP-154).	17
Figure 1.17:	Figure C6a – C6c Volume 7, Annex 6.2: Landscape and seascape character baseline technical report Part 2 (APP-154).	18
Figure 1.18:	Figure C7a - C7c Volume 7, Annex 6.2: Landscape and seascape character baseline technical report Part 2 (APP-154).	19
Figure 1.19:	Figure C8a - c8C Volume 7, Annex 6.2: Landscape and seascape character baseline technical report Part 2 (APP-154).	20
Figure 1.20:	Figure C9a - C9c Volume 7, Annex 6.2: Landscape and seascape character baseline technical report Part 2 (APP-154).	21
Figure 1.21:	Figure C10a - C10c Volume 7, Annex 6.2: Landscape and seascape character baseline technical report Part 2 (APP-154).	22
Figure 1.22:	Figure C11a - C11c Volume 7, Annex 6.2: Landscape and seascape character baseline technical report Part 2 (APP-154).	23
Figure 1.23:	Figure A1 of Volume 7, Annex 6.3: Visual baseline technical report - onshore development (APP-155).	24

MONA OFFSHORE WIND PROJECT

Figure 1.24: Figure B1 of Volume 7, Annex 6.3: Visual baseline technical report - onshore development (APP-155)..... 25

Figure 1.25: Figure B2 of Volume 7, Annex 6.3: Visual baseline technical report - onshore development (APP-155)..... 26

Figure 1.26: Figure B3 of Volume 7, Annex 6.3: Visual baseline technical report - onshore development (APP-155)..... 27

Figure 1.27: Figure B4 of Volume 7, Annex 6.3: Visual baseline technical report - onshore development (APP-155)..... 28

Figure 1.28: Figure B5 of Volume 7, Annex 6.3: Visual baseline technical report - onshore development (APP-155)..... 29

Figure 1.29: Figure B6 of Volume 7, Annex 6.3: Visual baseline technical report - onshore development (APP-155)..... 30

Figure 1.30: Figure B7 of Volume 7, Annex 6.3: Visual baseline technical report - onshore development (APP-155)..... 31

Figure 1.31: Figure B8 of Volume 7, Annex 6.3: Visual baseline technical report - onshore development (APP-155)..... 32

Figure 1.32: Figure B9 of Volume 7, Annex 6.3: Visual baseline technical report - onshore development (APP-155)..... 33

Figure 1.33: Figure B10 of Volume 7, Annex 6.3: Visual baseline technical report - onshore development (APP-155)..... 34

Figure 1.34: Figure B11 of Volume 7, Annex 6.3: Visual baseline technical report - onshore development (APP-155)..... 35

Figure 1.35: Figure B12 of Volume 7, Annex 6.3: Visual baseline technical report - onshore development (APP-155)..... 36

Figure 1.36: Figure B13 of Volume 7, Annex 6.3: Visual baseline technical report - onshore development (APP-155)..... 37

Figure 1.37: Figure B14 of Volume 7, Annex 6.3: Visual baseline technical report - onshore development (APP-155)..... 38

Figure 1.38: Figure B15 of Volume 7, Annex 6.3: Visual baseline technical report - onshore development (APP-155)..... 39

Figure 1.39: Figure B16 of Volume 7, Annex 6.3: Visual baseline technical report - onshore development (APP-155)..... 40

Figure 1.40: Figure B17 of Volume 7, Annex 6.3: Visual baseline technical report - onshore development (APP-155)..... 41

Figure 1.41: Figure B18 of Volume 7, Annex 6.3: Visual baseline technical report - onshore development (APP-155)..... 42

Figure 1.42: Figure B19 of Volume 7, Annex 6.3: Visual baseline technical report - onshore development (APP-155)..... 43

Figure 1.43: Figure B20 of Volume 7, Annex 6.3: Visual baseline technical report - onshore development (APP-155)..... 44

Figure 1.44: Figure B21 of Volume 7, Annex 6.3: Visual baseline technical report - onshore development (APP-155)..... 45

Figure 1.45: Figure B22 of Volume 7, Annex 6.3: Visual baseline technical report - onshore development (APP-155)..... 46

Figure 1.46: Figure B23 of Volume 7, Annex 6.3: Visual baseline technical report - onshore development (APP-155)..... 47

Figure 1.47: Figure B24 of Volume 7, Annex 6.3: Visual baseline technical report - onshore development (APP-155)..... 48

Figure 1.48: Figure B25 of Volume 7, Annex 6.3: Visual baseline technical report - onshore development (APP-155)..... 49

Figure 1.49: Figure B26 of Volume 7, Annex 6.3: Visual baseline technical report - onshore development (APP-155)..... 50

Figure 1.50: Figure B27 of Volume 7, Annex 6.3: Visual baseline technical report - onshore development (APP-155)..... 51

Figure 1.51: Figure B28 of Volume 7, Annex 6.3: Visual baseline technical report - onshore development (APP-155)..... 52

MONA OFFSHORE WIND PROJECT

Figure 1.52: Figure B29 of Volume 7, Annex 6.3: Visual baseline technical report - onshore development (APP-155)..... 53

Figure 1.53: Figure B30 of Volume 7, Annex 6.3: Visual baseline technical report - onshore development (APP-155)..... 54

Figure 1.54: Figure A1 of Volume 7, Annex 6.4: Landscape, seascape and visual impact assessment methodology (APP-156). 55

Figure 1.55: Figure A2 of Volume 7, Annex 6.4: Landscape, seascape and visual impact assessment methodology (APP-156). 56

Glossary

Term	Meaning
Applicant	Mona Offshore Wind Limited.
Development Consent Order (DCO)	An order made under the Planning Act 2008 granting development consent for one or more Nationally Significant Infrastructure Project (NSIP).
Mona Offshore Wind Project	The Mona Offshore Wind Project is comprised of both the generation assets, offshore and onshore transmission assets, and associated activities.
The Planning Inspectorate	The agency responsible for operating the planning process for Nationally Significant Infrastructure Projects.

1 Figure updates to address inconsistency between Onshore Works Plan and Environmental Statement figures

1.1 Introduction

1.1.1.1 This document has been prepared in response to Section 51 advice from the Examining Authority in relation to the figures included in the Mona Offshore Wind Project DCO application. The point from the Section 51 advice is as follows:

Para 12.1 of the Application Letter (Doc A1) states that the proposed operational access to the existing National Grid Substation from the proposed Mona Substation access from Glascoed Road has been assessed in the Environmental Impact Assessment (EIA) but part of it is not currently shown on all the EIA figures.

The Inspectorate advises the Applicant to undertake a thorough audit of the ES figures to ensure that they are consistent with the Onshore Work Plan (Doc B3). Amended ES figures should be provided, together with a list of the figures subject to amendment.

1.2 Response

1.2.1.1 The Applicant has updated the figures of the Environmental Statement and other relevant application document figures as appropriate to show the proposed operational access to the existing National Grid Substation from the proposed Mona Substation access road. The figures that have been updated is provided below.

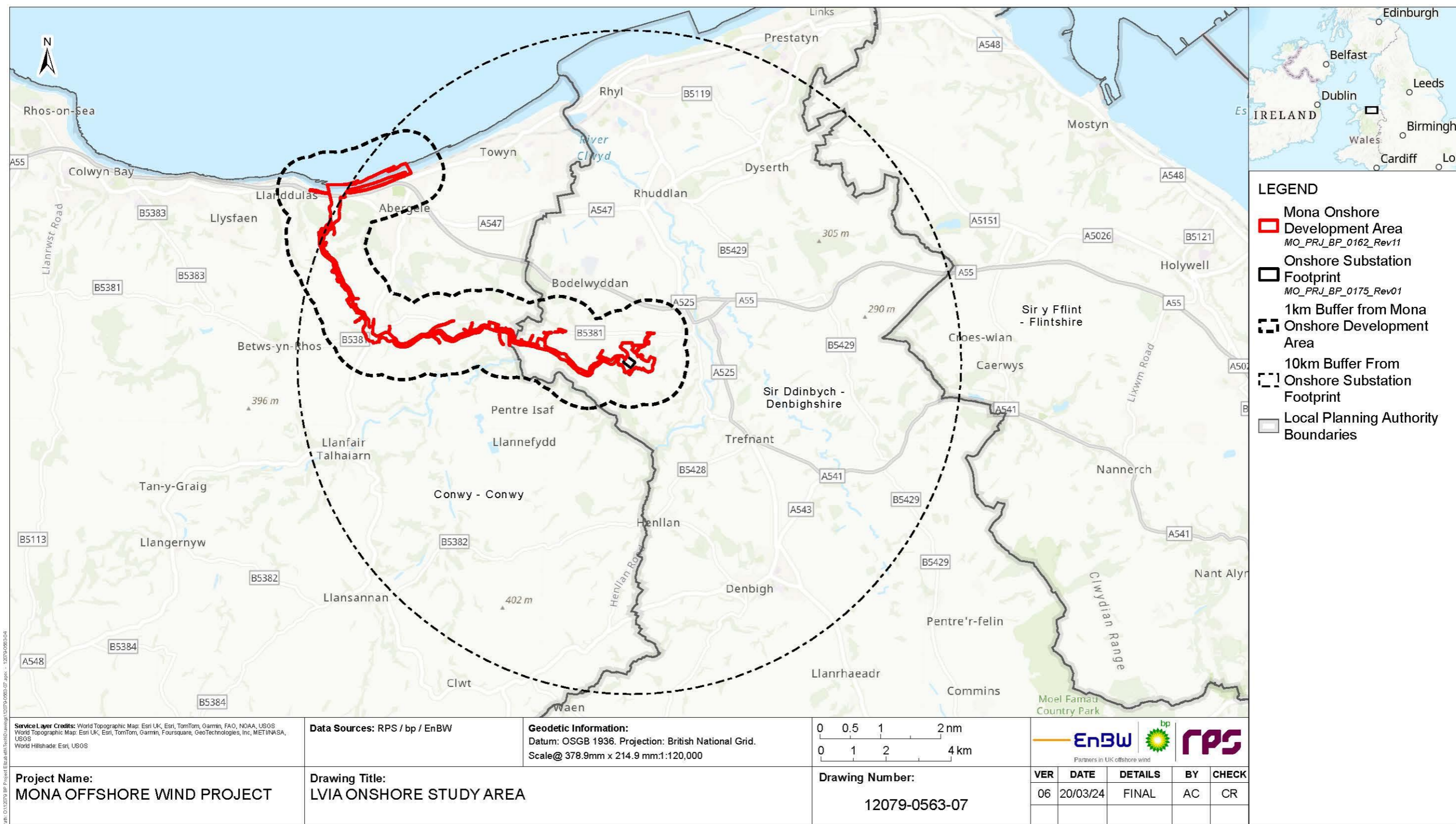


Figure 1.1: Figure A.1 of Volume 7, Annex 6.2: Landscape and seascape character baseline technical report Part 1 (APP-153).

MONA OFFSHORE WIND PROJECT

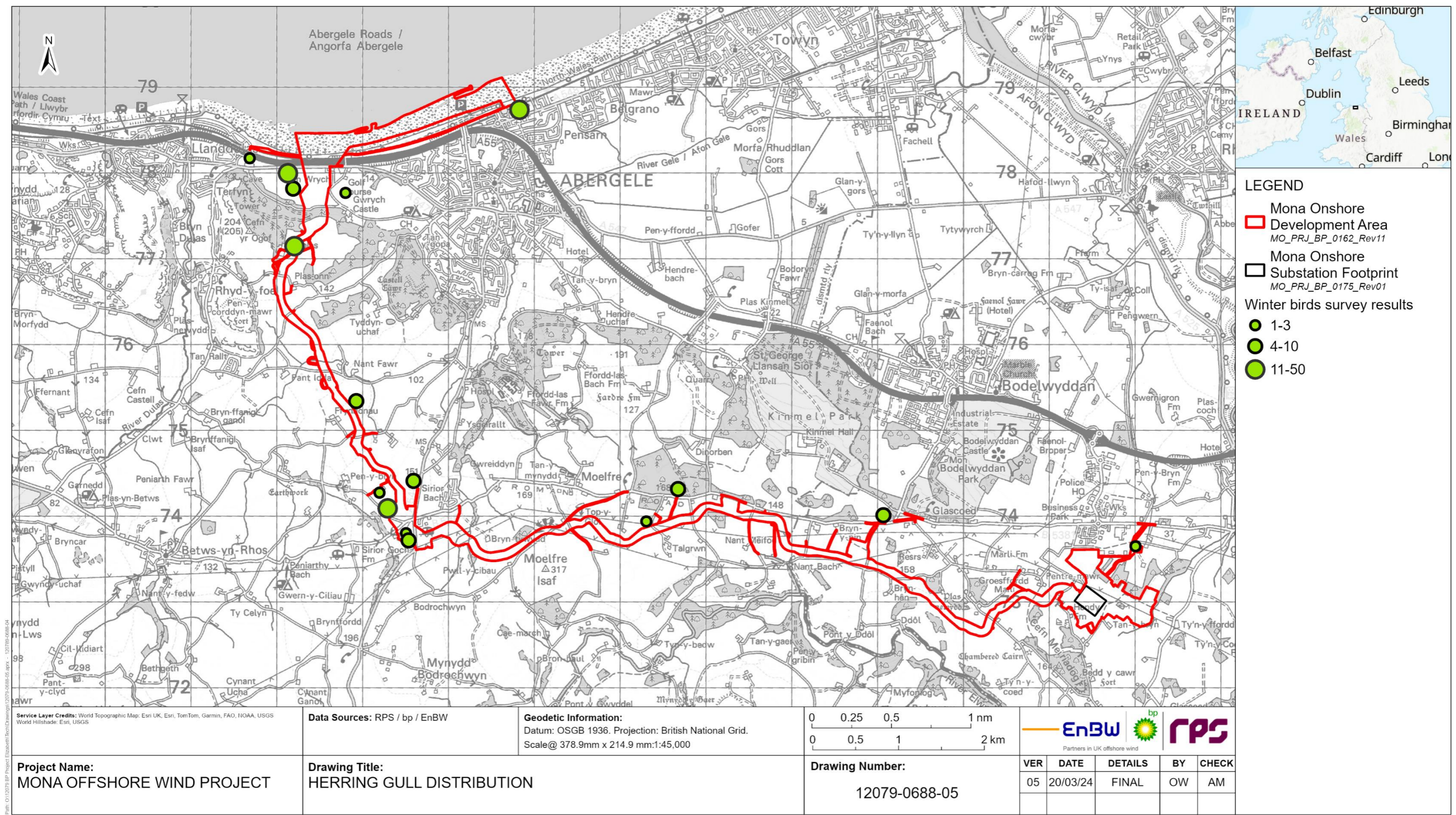


Figure 1.2: Figure B.1 of Volume 7, Annex 6.2: Landscape and seascape character baseline technical report Part 1 (APP-153).

MONA OFFSHORE WIND PROJECT

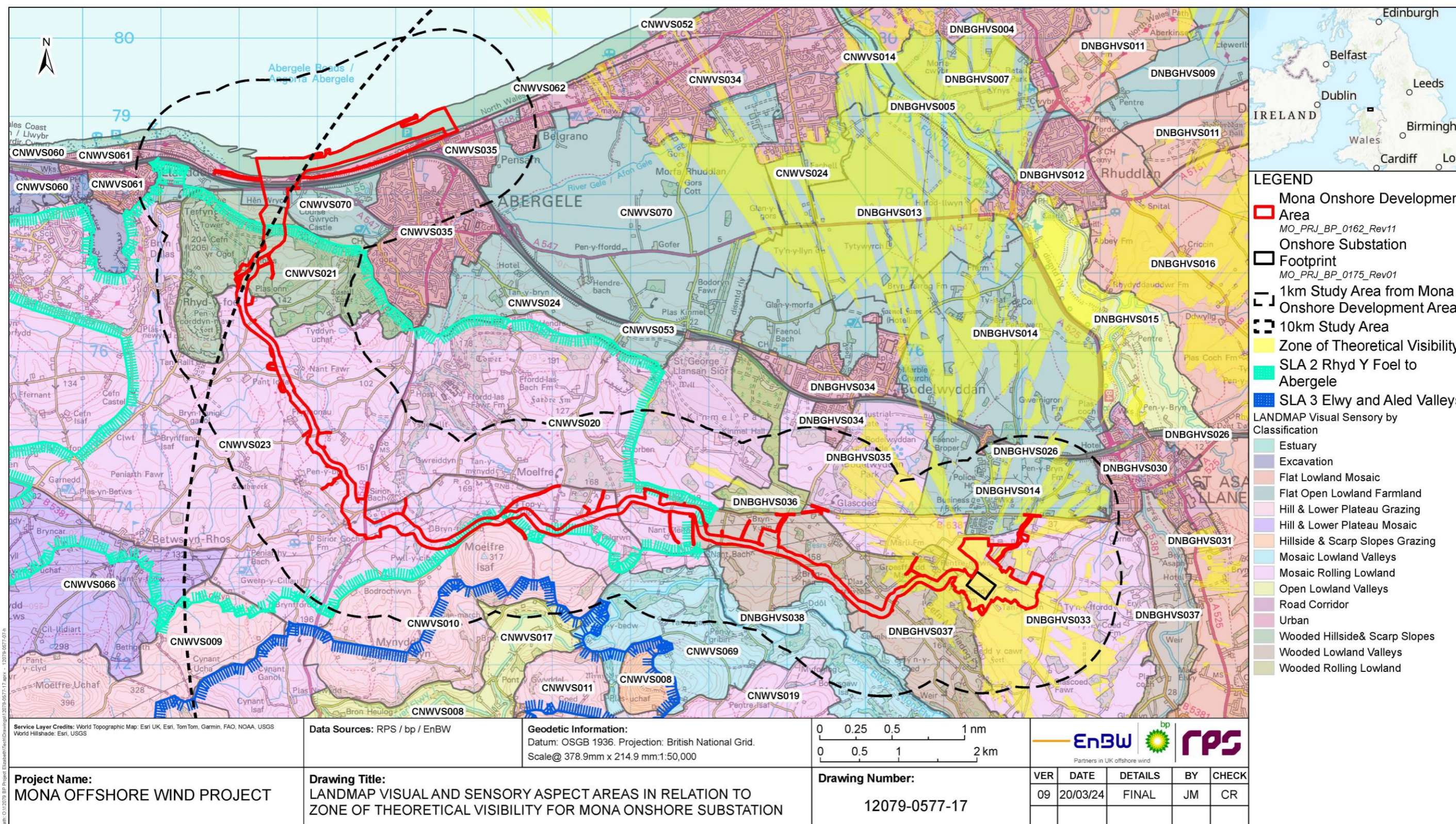


Figure 1.3: Figure B.2 of Volume 7, Annex 6.2: Landscape and seascape character baseline technical report Part 1 (APP-153).

MONA OFFSHORE WIND PROJECT

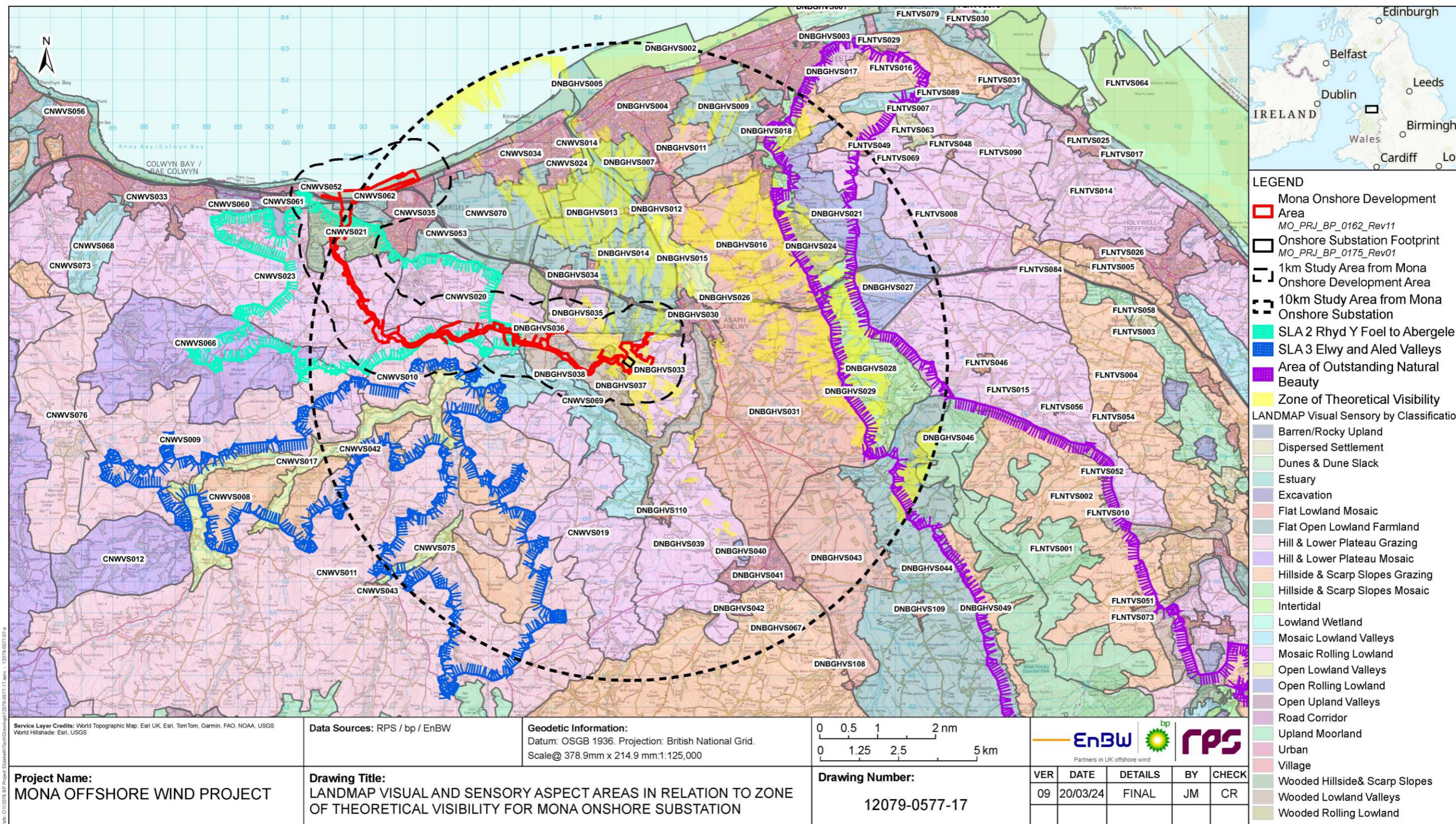


Figure 1.4: Figure B.3 of Volume 7, Annex 6.2: Landscape and seascape character baseline technical report Part 1 (APP-153).

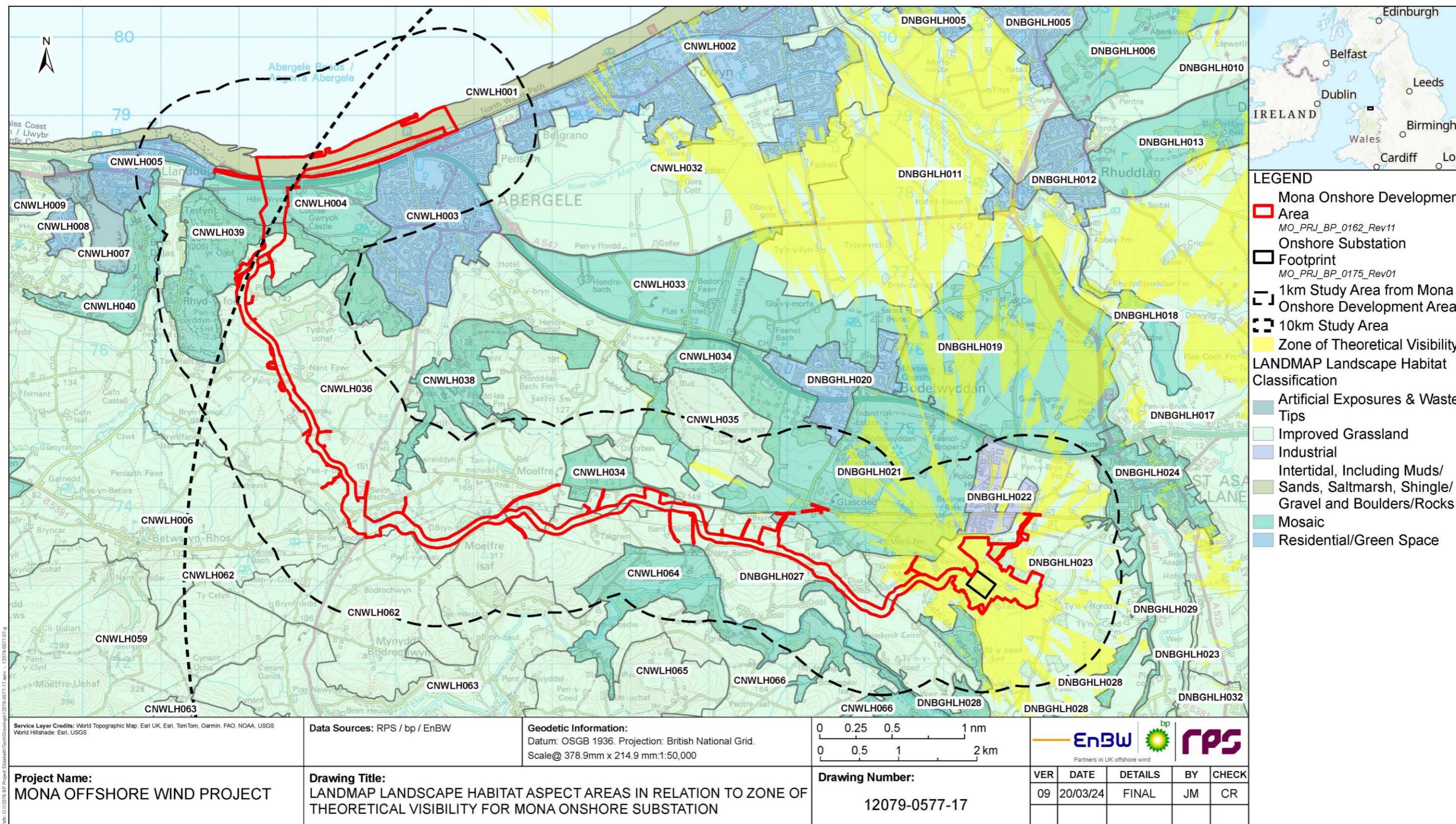


Figure 1.5: Figure B.4 of Volume 7, Annex 6.2: Landscape and seascape character baseline technical report Part 1 (APP-153).

MONA OFFSHORE WIND PROJECT

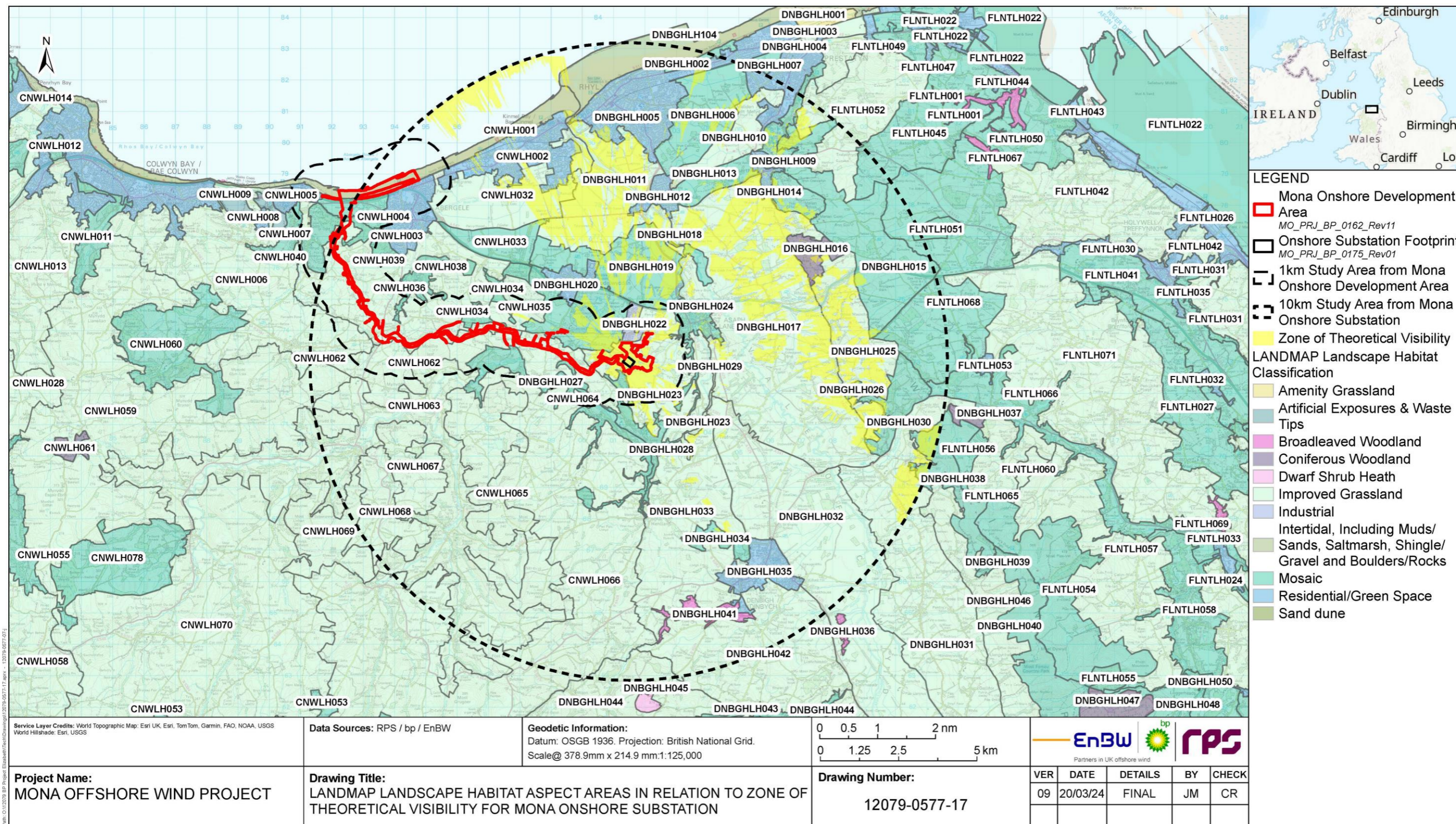


Figure 1.6: Figure B.5 of Volume 7, Annex 6.2: Landscape and seascape character baseline technical report Part 1 (APP-153).

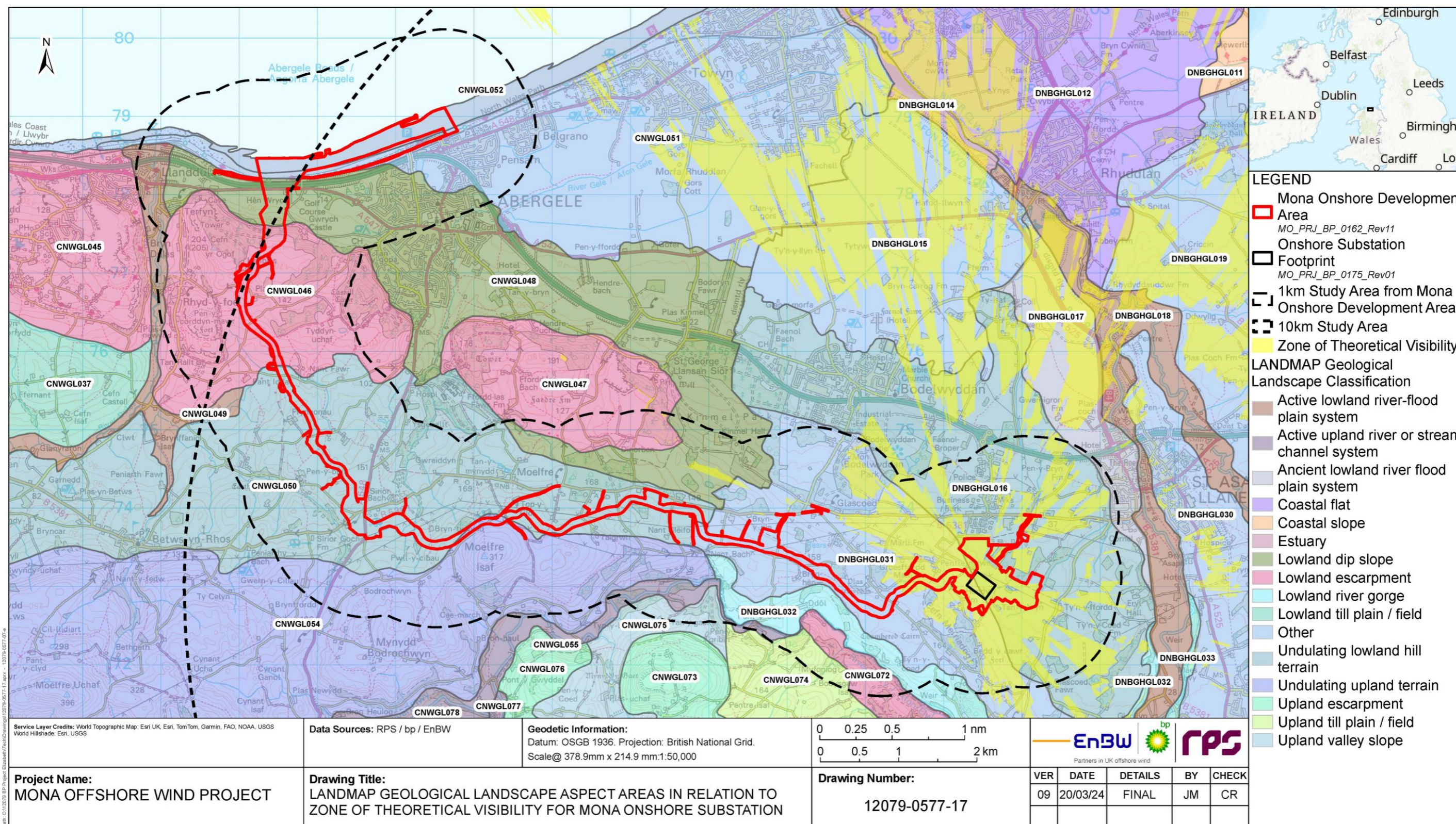


Figure 1.7: Figure B.6 of Volume 7, Annex 6.2: Landscape and seascape character baseline technical report Part 1 (APP-153).

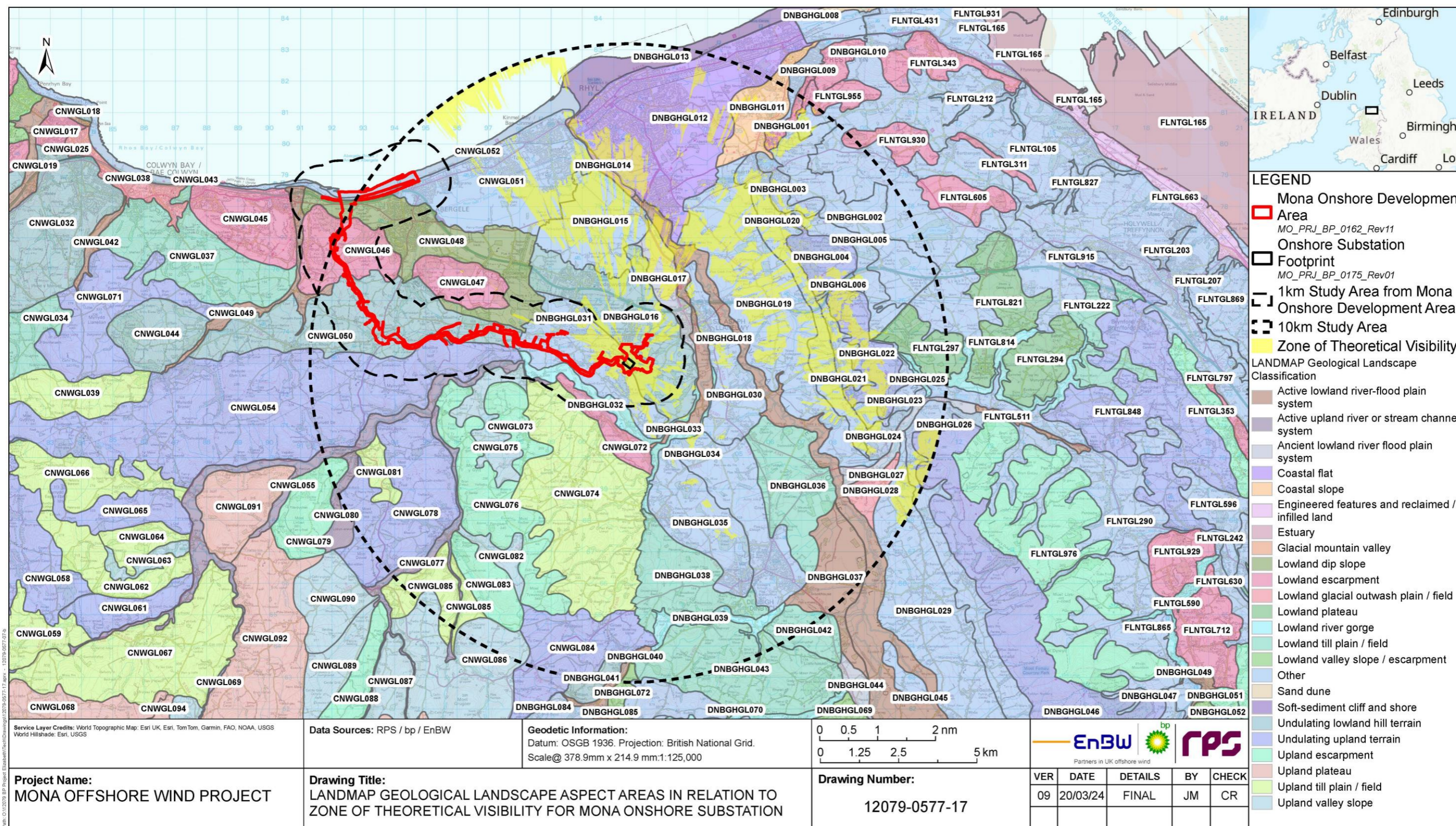


Figure 1.8: Figure B.7 of Volume 7, Annex 6.2: Landscape and seascape character baseline technical report Part 1 (APP-153).

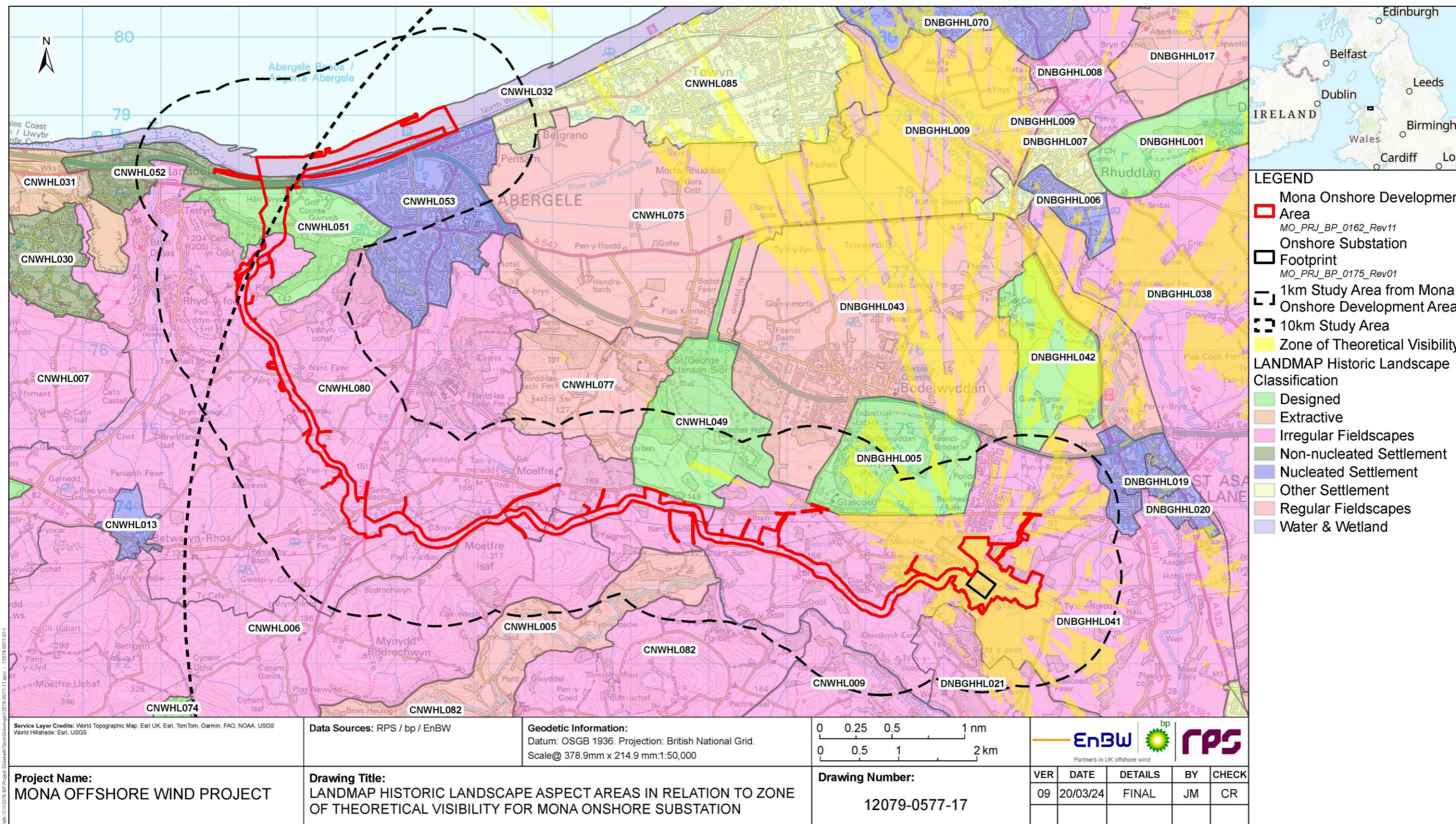


Figure 1.9: Figure B.8 of Volume 7, Annex 6.2: Landscape and seascape character baseline technical report Part 1 (APP-153).

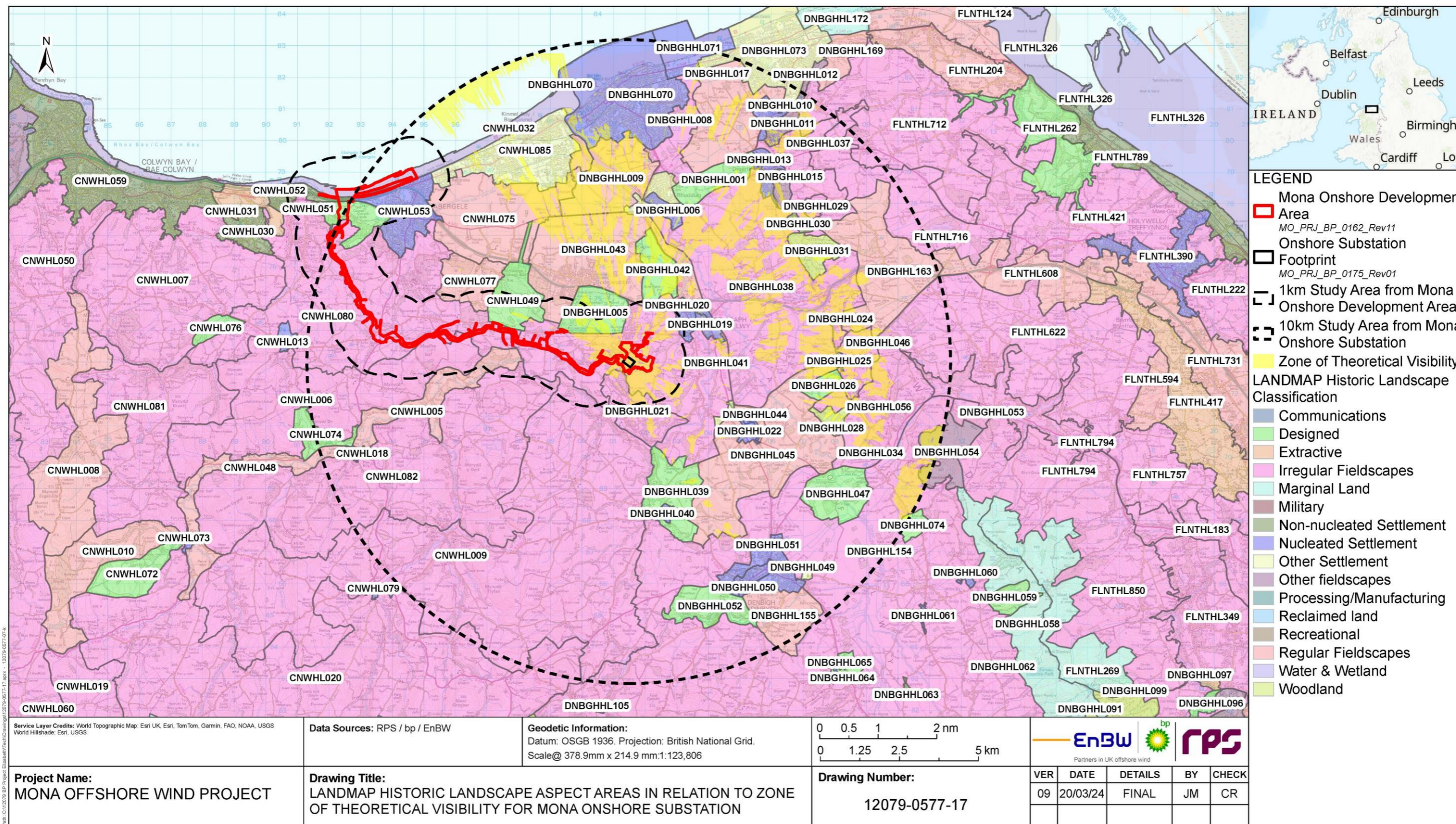


Figure 1.10: Figure B.9 of Volume 7, Annex 6.2: Landscape and seascape character baseline technical report Part 1 (APP-153).

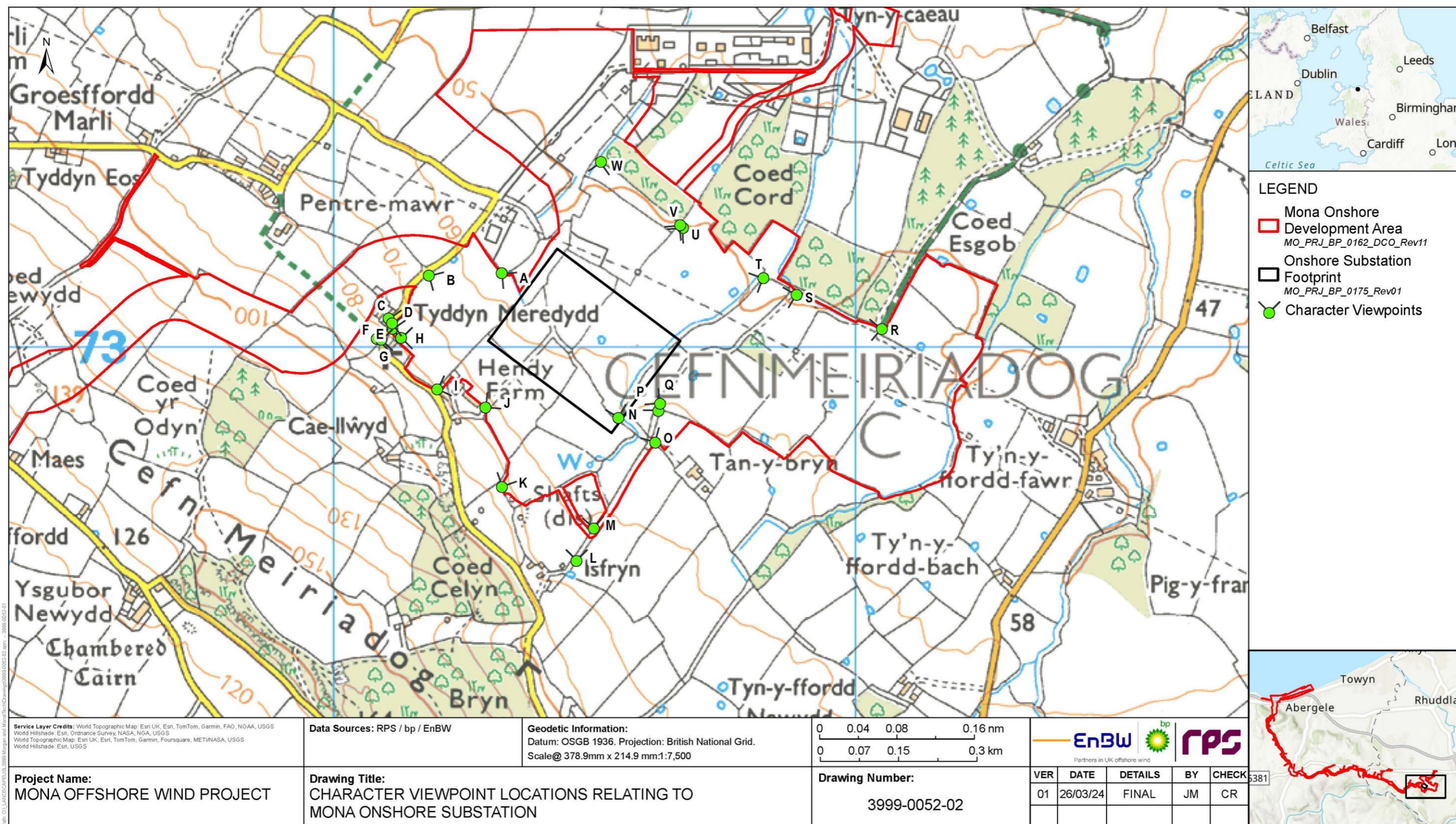


Figure 1.11: Figure C.1 Volume 7, Annex 6.2: Landscape and seascape character baseline technical report Part 2 (APP-154).



Approximate 180° Panorama, for context only

	<p>Character Viewpoint: A1 - North</p>	<p>Mona Offshore Wind Project JSL3999 For context only</p>	<p>Distance to site: 56 m Date of photograph: 13-14/11/2023 OS Grid Ref: 301322, 373141</p>	<p>Onshore Character Baseline Photography Appendix C Figure C1a</p>
--	--	--	---	---



Approximate 180° Panorama, for context only

	<p>Character Viewpoint: A2 - South East</p>	<p>Mona Offshore Wind Project JSL3999 For context only</p>	<p>Distance to site: 56 m Date of photograph: 13-14/11/2023 OS Grid Ref: 301322, 373141</p>	<p>Onshore Character Baseline Photography Appendix C Figure C1b</p>
--	---	--	---	---



Approximate 180° Panorama, for context only

	<p>Character Viewpoint: B</p>	<p>Mona Offshore Wind Project JSL3999 For context only</p>	<p>Distance to site: 165 m Date of photograph: 13-14/11/2023 OS Grid Ref: 301182, 373136</p>	<p>Onshore Character Baseline Photography Appendix C Figure C1c</p>
--	-------------------------------	--	--	---

View-info-02\Projectal LANDSCAPE\JSL3999 Moran and Mona\Tech\Drawings\3999-00-18-03.indd

Figure 1.12: Figures C1a - C1c Volume 7, Annex 6.2: Landscape and seascape character baseline technical report Part 2 (APP-154).



Approximate 180° Panorama, for context only

< indicates the 90° field of view from the respective viewpoint

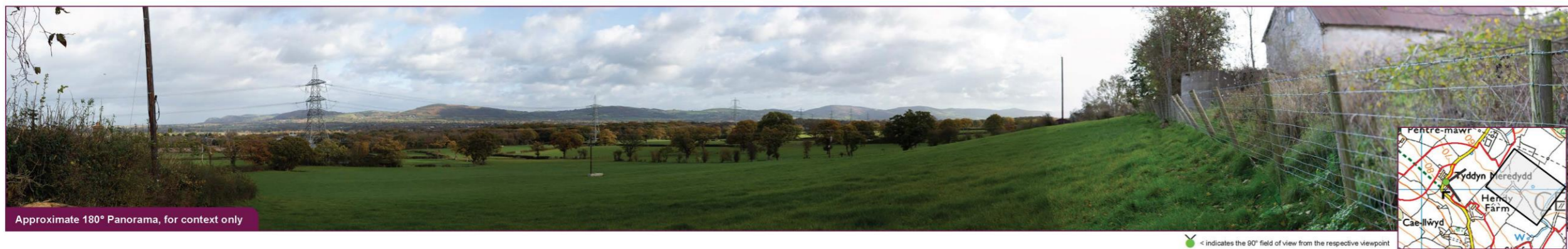
		<p>Character Viewpoint: C</p>	<p>Mona Offshore Wind Project JSL3999 For context only</p>	<p>Distance to site: 195 m Date of photograph: 13-14/11/2023 OS Grid Ref: 301105, 373054</p>	<p>Onshore Character Baseline Photography Appendix C Figure C2a</p>
--	--	--------------------------------------	--	--	--



Approximate 180° Panorama, for context only

< indicates the 90° field of view from the respective viewpoint

		<p>Character Viewpoint: D</p>	<p>Mona Offshore Wind Project JSL3999 For context only</p>	<p>Distance to site: 187 m Date of photograph: 13-14/11/2023 OS Grid Ref: 301112, 373045</p>	<p>Onshore Character Baseline Photography Appendix C Figure C2b</p>
--	--	--------------------------------------	--	--	--



Approximate 180° Panorama, for context only

< indicates the 90° field of view from the respective viewpoint

		<p>Character Viewpoint: E</p>	<p>Mona Offshore Wind Project JSL3999 For context only</p>	<p>Distance to site: 185 m Date of photograph: 13-14/11/2023 OS Grid Ref: 301112, 373035</p>	<p>Onshore Character Baseline Photography Appendix C Figure C2c</p>
--	--	--------------------------------------	--	--	--

\\eur-mpfs-02\Projects_LANDSCAPE\JSL3999 Morgan and MonaTech\Drawings\3999-0048-03.indd

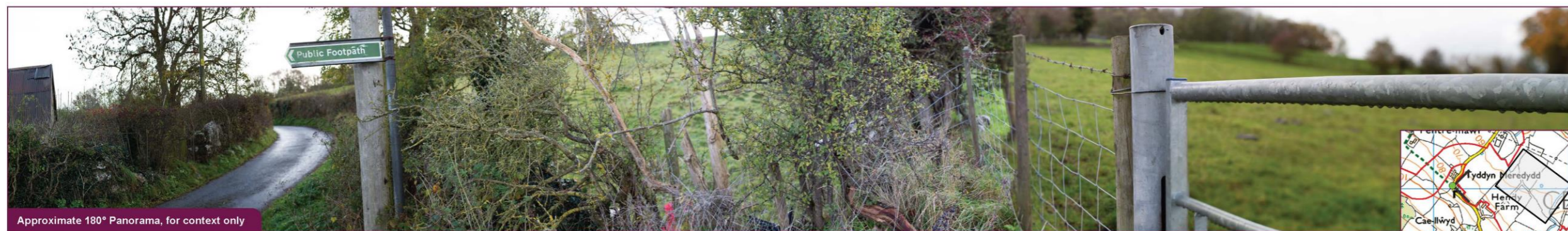
Figure 1.13: Figure C2a - C2c Volume 7, Annex 6.2: Landscape and seascape character baseline technical report Part 2 (APP-154).



Approximate 180° Panorama, for context only

< indicates the 90° field of view from the respective viewpoint

	<p>Character Viewpoint: F</p>	<p>Mona Offshore Wind Project JSL3999 For context only</p>	<p>Distance to site: 213 m Date of photograph: 13-14/11/2023 OS Grid Ref: 301082, 373015</p>	<p>Onshore Character Baseline Photography Appendix C Figure C3a</p>
--	--------------------------------------	---	--	--



Approximate 180° Panorama, for context only

< indicates the 90° field of view from the respective viewpoint

	<p>Character Viewpoint: G1</p>	<p>Mona Offshore Wind Project JSL3999 For context only</p>	<p>Distance to site: 205 m Date of photograph: 13-14/11/2023 OS Grid Ref: 301091, 373013</p>	<p>Onshore Character Baseline Photography Appendix C Figure C3b</p>
--	---------------------------------------	---	--	--



Approximate 180° Panorama, for context only

< indicates the 90° field of view from the respective viewpoint

	<p>Character Viewpoint: G2</p>	<p>Mona Offshore Wind Project JSL3999 For context only</p>	<p>Distance to site: 205 m Date of photograph: 13-14/11/2023 OS Grid Ref: 301091, 373013</p>	<p>Onshore Character Baseline Photography Appendix C Figure C3c</p>
--	---------------------------------------	---	--	--

\\eur-mpfs-02\Project\LANDSCAPE\JSL3999 Morgan and Mona\TechDrawings\3999-0048-03.indd

Figure 1.14: Figure C3a - C3c Volume 7, Annex 6.2: Landscape and seascape character baseline technical report Part 2 (APP-154).



Approximate 180° Panorama, for context only

< indicates the 90° field of view from the respective viewpoint

	<p>Character Viewpoint: G3</p>	<p>Mona Offshore Wind Project JSL3999 For context only</p>	<p>Distance to site: 205 m Date of photograph: 13-14/11/2023 OS Grid Ref: 301091, 373013</p>	<p>Onshore Character Baseline Photography Appendix C Figure C4a</p>
--	---------------------------------------	--	--	---



Approximate 180° Panorama, for context only

< indicates the 90° field of view from the respective viewpoint

	<p>Character Viewpoint: H</p>	<p>Mona Offshore Wind Project JSL3999 For context only</p>	<p>Distance to site: 167 m Date of photograph: 13-14/11/2023 OS Grid Ref: 301129, 373017</p>	<p>Onshore Character Baseline Photography Appendix C Figure C4b</p>
--	--------------------------------------	--	--	---



Approximate 180° Panorama, for context only

< indicates the 90° field of view from the respective viewpoint

	<p>Character Viewpoint: I1</p>	<p>Mona Offshore Wind Project JSL3999 For context only</p>	<p>Distance to site: 136 m Date of photograph: 13-14/11/2023 OS Grid Ref: 301198, 372918</p>	<p>Onshore Character Baseline Photography Appendix C Figure C4c</p>
--	---------------------------------------	--	--	---

\\eur-mpls-02\Projects\LANDSCAPE\JSL3999 Morgan and Mona\Tech\Drawings\3999-0048-03.indd

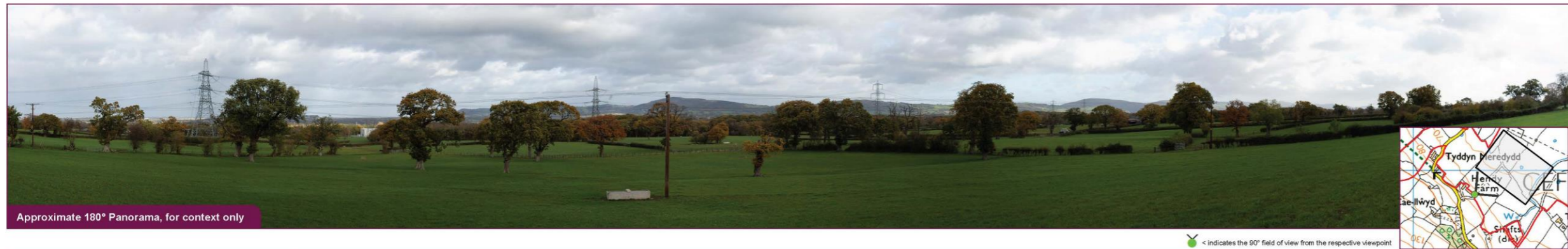
Figure 1.15: Figure C4a - C4c Volume 7, Annex 6.2: Landscape and seascape character baseline technical report Part 2 (APP-154).



Approximate 180° Panorama, for context only

< indicates the 90° field of view from the respective viewpoint

	<p>Character Viewpoint: I2</p>	<p>Mona Offshore Wind Project JSL3999 For context only</p>	<p>Distance to site: 136 m Date of photograph: 13-14/11/2023 OS Grid Ref: 301198, 372918</p>	<p>Onshore Character Baseline Photography Appendix C Figure C5a</p>
--	---------------------------------------	--	--	---



Approximate 180° Panorama, for context only

< indicates the 90° field of view from the respective viewpoint

	<p>Character Viewpoint: J1</p>	<p>Mona Offshore Wind Project JSL3999 For context only</p>	<p>Distance to site: 107 m Date of photograph: 13-14/11/2023 OS Grid Ref: 301291, 372884</p>	<p>Onshore Character Baseline Photography Appendix C Figure C5b</p>
--	---------------------------------------	--	--	---



Approximate 180° Panorama, for context only

< indicates the 90° field of view from the respective viewpoint

	<p>Character Viewpoint: J2</p>	<p>Mona Offshore Wind Project JSL3999 For context only</p>	<p>Distance to site: 107 m Date of photograph: 13-14/11/2023 OS Grid Ref: 301291, 372884</p>	<p>Onshore Character Baseline Photography Appendix C Figure C5c</p>
--	---------------------------------------	--	--	---

\\eur-mpfs-02\Projects_LANDSCAPE\JSL3999 Morgan and MonalTech\Drawings\3999-0048-03.indd

Figure 1.16: Figure C5a - C5c Volume 7, Annex 6.2: Landscape and seascape character baseline technical report Part 2 (APP-154).



	Character Viewpoint: K	Mona Offshore Wind Project JSL3999 For context only	Distance to site: 210 m Date of photograph: 13-14/11/2023 OS Grid Ref: 301322, 372731	Onshore Character Baseline Photography Appendix C Figure C6a
--	-------------------------------	--	---	--



	Character Viewpoint: L	Mona Offshore Wind Project JSL3999 For context only	Distance to site: 256 m Date of photograph: 13-14/11/2023 OS Grid Ref: 301465, 372590	Onshore Character Baseline Photography Appendix C Figure C6b
--	-------------------------------	--	---	--



	Character Viewpoint: M	Mona Offshore Wind Project JSL3999 For context only	Distance to site: 188 m Date of photograph: 13-14/11/2023 OS Grid Ref: 301498, 372652	Onshore Character Baseline Photography Appendix C Figure C6c
--	-------------------------------	--	---	--

\\eur-rps-02\Projects_LANDSCAPE\JSL3999 Morgan and Monal\Tech\Drawings\3999-0048-03.indd

Figure 1.17: Figure C6a – C6c Volume 7, Annex 6.2: Landscape and seascape character baseline technical report Part 2 (APP-154).



Approximate 180° Panorama, for context only

< indicates the 90° field of view from the respective viewpoint

	<p>Character Viewpoint: N1</p>	<p>Mona Offshore Wind Project JSL3999 For context only</p>	<p>Distance to site: 0 m Date of photograph: 13-14/11/2023 OS Grid Ref: 301545, 372863</p>	<p>Onshore Character Baseline Photography Appendix C Figure C7a</p>
--	---------------------------------------	---	--	--



Approximate 180° Panorama, for context only

< indicates the 90° field of view from the respective viewpoint

	<p>Character Viewpoint: N2</p>	<p>Mona Offshore Wind Project JSL3999 For context only</p>	<p>Distance to site: 0 m Date of photograph: 13-14/11/2023 OS Grid Ref: 301545, 372863</p>	<p>Onshore Character Baseline Photography Appendix C Figure C7b</p>
--	---------------------------------------	---	--	--



Approximate 180° Panorama, for context only

< indicates the 90° field of view from the respective viewpoint

	<p>Character Viewpoint: O1</p>	<p>Mona Offshore Wind Project JSL3999 For context only</p>	<p>Distance to site: 79 m Date of photograph: 13-14/11/2023 OS Grid Ref: 301616, 372816</p>	<p>Onshore Character Baseline Photography Appendix C Figure C7c</p>
--	---------------------------------------	---	---	--

\\eur-mpts-02\Projects\LANDSCAPE\SL3999 Morgan and Mona\Tech\Drawings\3999-0048-03.indd

Figure 1.18: Figure C7a - C7c Volume 7, Annex 6.2: Landscape and seascape character baseline technical report Part 2 (APP-154).



Approximate 180° Panorama, for context only

< indicates the 90° field of view from the respective viewpoint

		<p>Character Viewpoint: O2</p>	<p>Mona Offshore Wind Project JSL3999 For context only</p>	<p>Distance to site: 79 m Date of photograph: 13-14/11/2023 OS Grid Ref: 301616, 372816</p>	<p>Onshore Character Baseline Photography Appendix C Figure C8a</p>
--	--	--------------------------------	--	---	---



Approximate 180° Panorama, for context only

< indicates the 90° field of view from the respective viewpoint

		<p>Character Viewpoint: P</p>	<p>Mona Offshore Wind Project JSL3999 For context only</p>	<p>Distance to site: 48 m Date of photograph: 13-14/11/2023 OS Grid Ref: 301622, 372877</p>	<p>Onshore Character Baseline Photography Appendix C Figure C8b</p>
--	--	-------------------------------	--	---	---



Approximate 180° Panorama, for context only

< indicates the 90° field of view from the respective viewpoint

		<p>Character Viewpoint: Q</p>	<p>Mona Offshore Wind Project JSL3999 For context only</p>	<p>Distance to site: 42 m Date of photograph: 13-14/11/2023 OS Grid Ref: 301625, 372890</p>	<p>Onshore Character Baseline Photography Appendix C Figure C8c</p>
--	--	-------------------------------	--	---	---

\\eur-mpls-02\Projects_LANDSCAPE\JSL3999 Morgan and MonalTech\Drawings\3999-0048-03.indd

Figure 1.19: Figure C8a - c8C Volume 7, Annex 6.2: Landscape and seascape character baseline technical report Part 2 (APP-154).



Approximate 180° Panorama, for context only

< indicates the 90° field of view from the respective viewpoint

	<p>Character Viewpoint: R</p>	<p>Mona Offshore Wind Project JSL3999 For context only</p>	<p>Distance to site: 387 m Date of photograph: 13-14/11/2023 OS Grid Ref: 302050, 373033</p>	<p>Onshore Character Baseline Photography Appendix C Figure C9a</p>
--	--------------------------------------	---	--	---



Approximate 180° Panorama, for context only

< indicates the 90° field of view from the respective viewpoint

	<p>Character Viewpoint: S</p>	<p>Mona Offshore Wind Project JSL3999 For context only</p>	<p>Distance to site: 239 m Date of photograph: 13-14/11/2023 OS Grid Ref: 301887, 373099</p>	<p>Onshore Character Baseline Photography Appendix C Figure C9b</p>
--	--------------------------------------	---	--	---



Approximate 180° Panorama, for context only

< indicates the 90° field of view from the respective viewpoint

	<p>Character Viewpoint: T1</p>	<p>Mona Offshore Wind Project JSL3999 For context only</p>	<p>Distance to site: 198 m Date of photograph: 13-14/11/2023 OS Grid Ref: 301823, 373131</p>	<p>Onshore Character Baseline Photography Appendix C Figure C9c</p>
--	---------------------------------------	---	--	---

\\neur-mpfs-02\Projects\LANDSCAPE\JSL3999 Morgan and MonalTech\Drawings\3999-0048-03.indd

Figure 1.20: Figure C9a - C9c Volume 7, Annex 6.2: Landscape and seascape character baseline technical report Part 2 (APP-154).



Approximate 180° Panorama, for context only

< indicates the 90° field of view from the respective viewpoint

 	<p>Character Viewpoint: T2</p>	<p>Mona Offshore Wind Project JSL3999 For context only</p>	<p>Distance to site: 198 Date of photograph: 13-14/11/2023 OS Grid Ref: 301823, 373131</p>	<p>Onshore Character Baseline Photography Appendix C Figure C10a</p>
---	---------------------------------------	--	--	--



Approximate 180° Panorama, for context only

< indicates the 90° field of view from the respective viewpoint

 	<p>Character Viewpoint: U1</p>	<p>Mona Offshore Wind Project JSL3999 For context only</p>	<p>Distance to site: 175 Date of photograph: 13-14/11/2023 OS Grid Ref: 301669, 373227</p>	<p>Onshore Character Baseline Photography Appendix C Figure C10b</p>
---	---------------------------------------	--	--	--



Approximate 180° Panorama, for context only

< indicates the 90° field of view from the respective viewpoint

 	<p>Character Viewpoint: U2</p>	<p>Mona Offshore Wind Project JSL3999 For context only</p>	<p>Distance to site: 175 Date of photograph: 13-14/11/2023 OS Grid Ref: 301669, 373227</p>	<p>Onshore Character Baseline Photography Appendix C Figure C10c</p>
---	---------------------------------------	--	--	--

\\eur-mpls-02\Project\LANDSCAPE\SL3999 Morgan and Mona\Tech\Drawings\3999-0048-03.indd

Figure 1.21: Figure C10a - C10c Volume 7, Annex 6.2: Landscape and seascape character baseline technical report Part 2 (APP-154).



Approximate 180° Panorama, for context only

< indicates the 90° field of view from the respective viewpoint

		<p>Character Viewpoint: V</p>	<p>Mona Offshore Wind Project JSL3999 For context only</p>	<p>Distance to site: 176 Date of photograph: 13-14/11/2023 OS Grid Ref: 301663, 373233</p>	<p>Onshore Character Baseline Photography Appendix C Figure C11a</p>
--	--	--------------------------------------	--	--	--



Approximate 180° Panorama, for context only

< indicates the 90° field of view from the respective viewpoint

		<p>Character Viewpoint: W1</p>	<p>Mona Offshore Wind Project JSL3999 For context only</p>	<p>Distance to site: 185 Date of photograph: 13-14/11/2023 OS Grid Ref: 301512, 373354</p>	<p>Onshore Character Baseline Photography Appendix C Figure C11b</p>
--	--	---------------------------------------	--	--	--



Approximate 180° Panorama, for context only

< indicates the 90° field of view from the respective viewpoint

		<p>Character Viewpoint: W2</p>	<p>Mona Offshore Wind Project JSL3999 For context only</p>	<p>Distance to site: 185 Date of photograph: 13-14/11/2023 OS Grid Ref: 301512, 373354</p>	<p>Onshore Character Baseline Photography Appendix C Figure C11c</p>
--	--	---------------------------------------	--	--	--

Weur-mpfs-02\Projects\LANDSCAPE\JSL3999 Morgan and Mona\Tech\Drawings\3999-0048-03.indd

Figure 1.22: Figure C11a - C11c Volume 7, Annex 6.2: Landscape and seascape character baseline technical report Part 2 (APP-154).

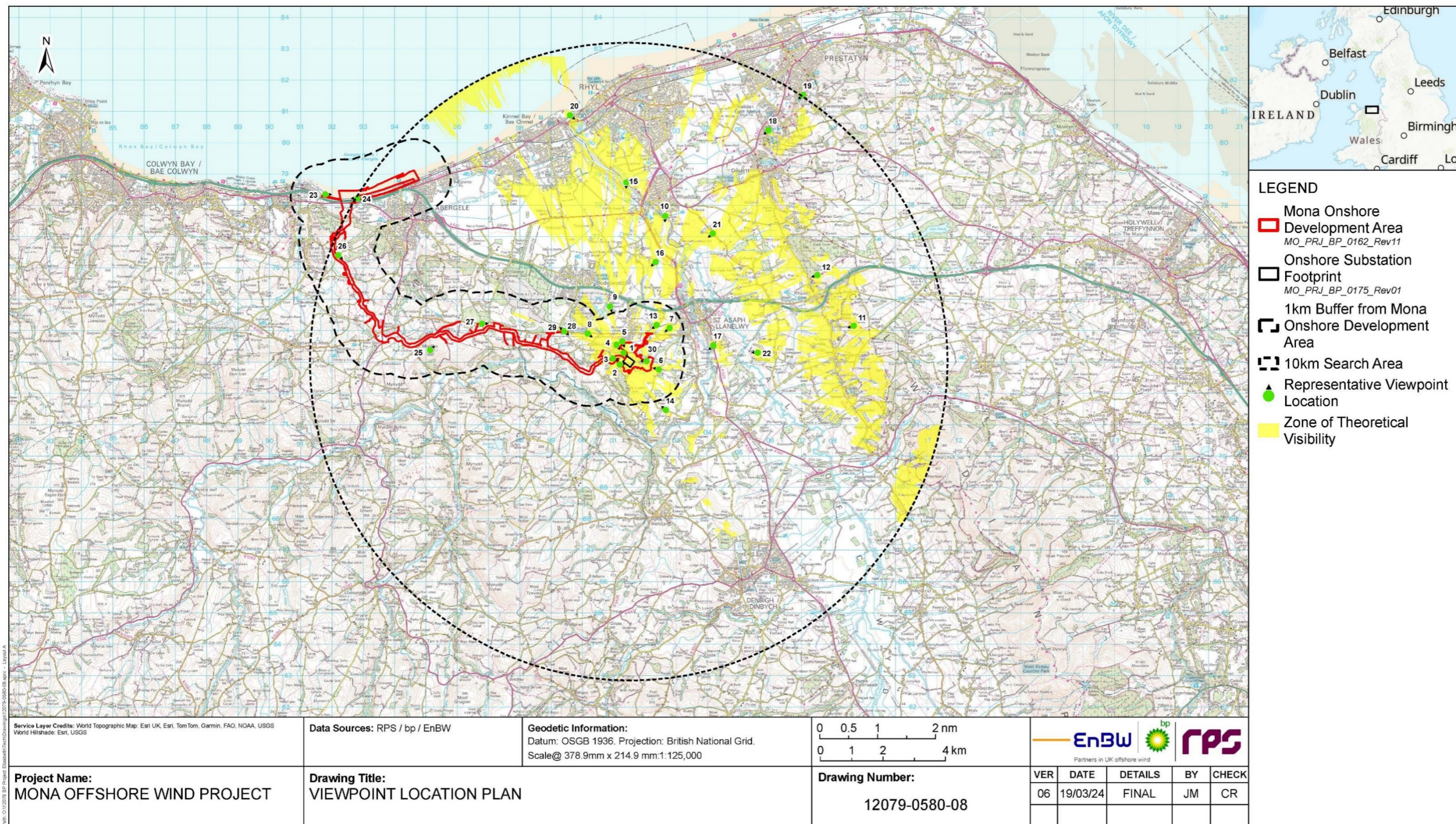


Figure 1.23: Figure A1 of Volume 7, Annex 6.3: Visual baseline technical report - onshore development (APP-155).



Figure 1.24: Figure B1 of Volume 7, Annex 6.3: Visual baseline technical report - onshore development (APP-155).



Figure 1.25: Figure B2 of Volume 7, Annex 6.3: Visual baseline technical report - onshore development (APP-155).



Figure 1.26: Figure B3 of Volume 7, Annex 6.3: Visual baseline technical report - onshore development (APP-155).



Figure 1.27: Figure B4 of Volume 7, Annex 6.3: Visual baseline technical report - onshore development (APP-155).



Figure 1.28: Figure B5 of Volume 7, Annex 6.3: Visual baseline technical report - onshore development (APP-155).



Figure 1.29: Figure B6 of Volume 7, Annex 6.3: Visual baseline technical report - onshore development (APP-155).



Figure 1.30: Figure B7 of Volume 7, Annex 6.3: Visual baseline technical report - onshore development (APP-155).



Figure 1.31: Figure B8 of Volume 7, Annex 6.3: Visual baseline technical report - onshore development (APP-155).

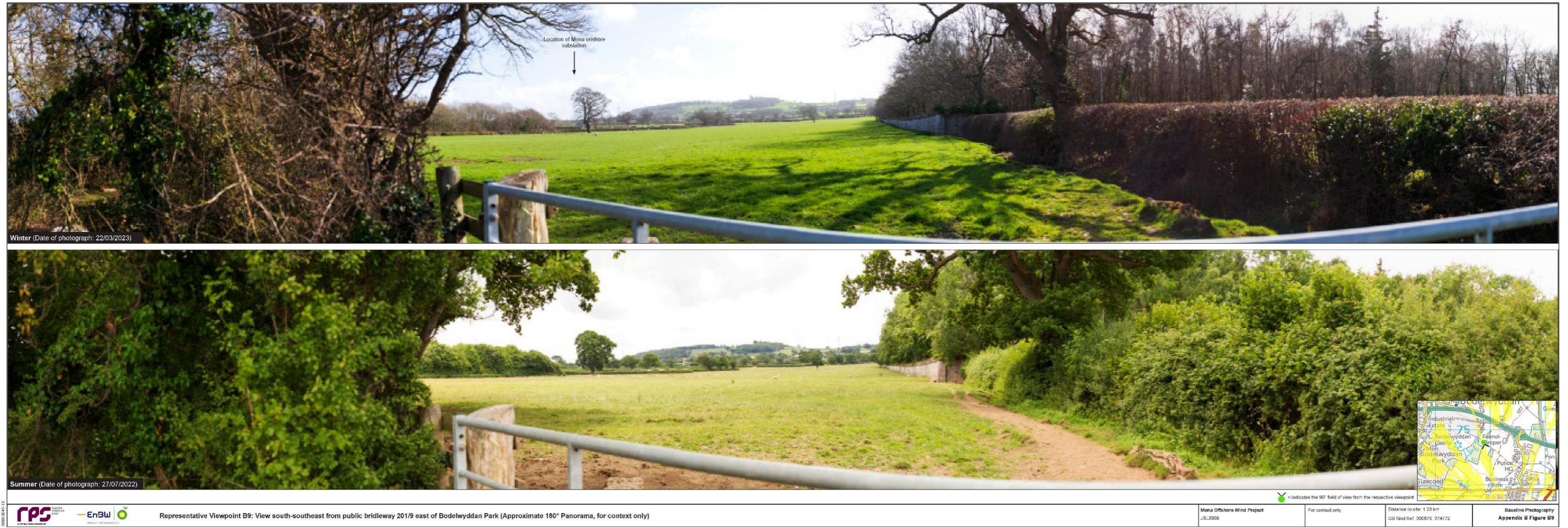


Figure 1.32: Figure B9 of Volume 7, Annex 6.3: Visual baseline technical report - onshore development (APP-155).



Figure 1.33: Figure B10 of Volume 7, Annex 6.3: Visual baseline technical report - onshore development (APP-155).



Figure 1.34: Figure B11 of Volume 7, Annex 6.3: Visual baseline technical report - onshore development (APP-155).



Figure 1.35: Figure B12 of Volume 7, Annex 6.3: Visual baseline technical report - onshore development (APP-155).



Figure 1.36: Figure B13 of Volume 7, Annex 6.3: Visual baseline technical report - onshore development (APP-155).



Figure 1.37: Figure B14 of Volume 7, Annex 6.3: Visual baseline technical report - onshore development (APP-155).



Figure 1.38: Figure B15 of Volume 7, Annex 6.3: Visual baseline technical report - onshore development (APP-155).



Figure 1.39: Figure B16 of Volume 7, Annex 6.3: Visual baseline technical report - onshore development (APP-155).



Figure 1.40: Figure B17 of Volume 7, Annex 6.3: Visual baseline technical report - onshore development (APP-155).



Figure 1.41: Figure B18 of Volume 7, Annex 6.3: Visual baseline technical report - onshore development (APP-155).

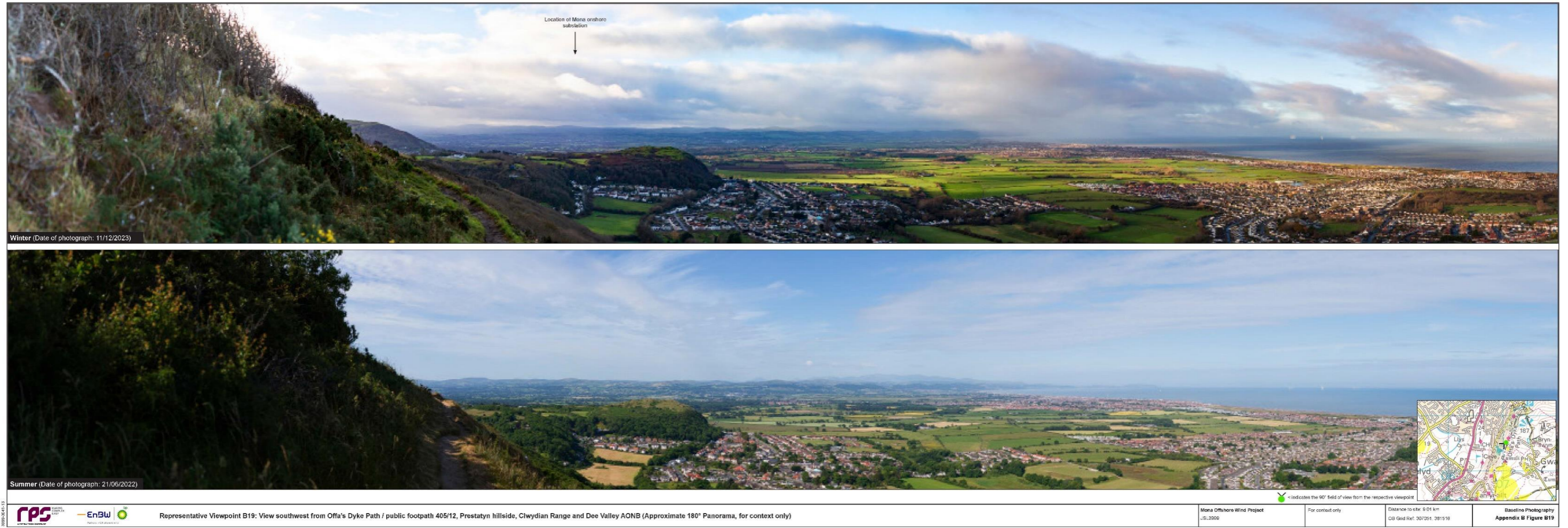


Figure 1.42: Figure B19 of Volume 7, Annex 6.3: Visual baseline technical report - onshore development (APP-155).



Figure 1.43: Figure B20 of Volume 7, Annex 6.3: Visual baseline technical report - onshore development (APP-155).



Figure 1.44: Figure B21 of Volume 7, Annex 6.3: Visual baseline technical report - onshore development (APP-155).



Figure 1.45: Figure B22 of Volume 7, Annex 6.3: Visual baseline technical report - onshore development (APP-155).



Figure 1.46: Figure B23 of Volume 7, Annex 6.3: Visual baseline technical report - onshore development (APP-155).



Figure 1.47: Figure B24 of Volume 7, Annex 6.3: Visual baseline technical report - onshore development (APP-155).



Figure 1.48: Figure B25 of Volume 7, Annex 6.3: Visual baseline technical report - onshore development (APP-155).



Figure 1.49: Figure B26 of Volume 7, Annex 6.3: Visual baseline technical report - onshore development (APP-155).



Figure 1.50: Figure B27 of Volume 7, Annex 6.3: Visual baseline technical report - onshore development (APP-155).



Figure 1.51: Figure B28 of Volume 7, Annex 6.3: Visual baseline technical report - onshore development (APP-155).



Figure 1.52: Figure B29 of Volume 7, Annex 6.3: Visual baseline technical report - onshore development (APP-155).



Figure 1.53: Figure B30 of Volume 7, Annex 6.3: Visual baseline technical report - onshore development (APP-155).

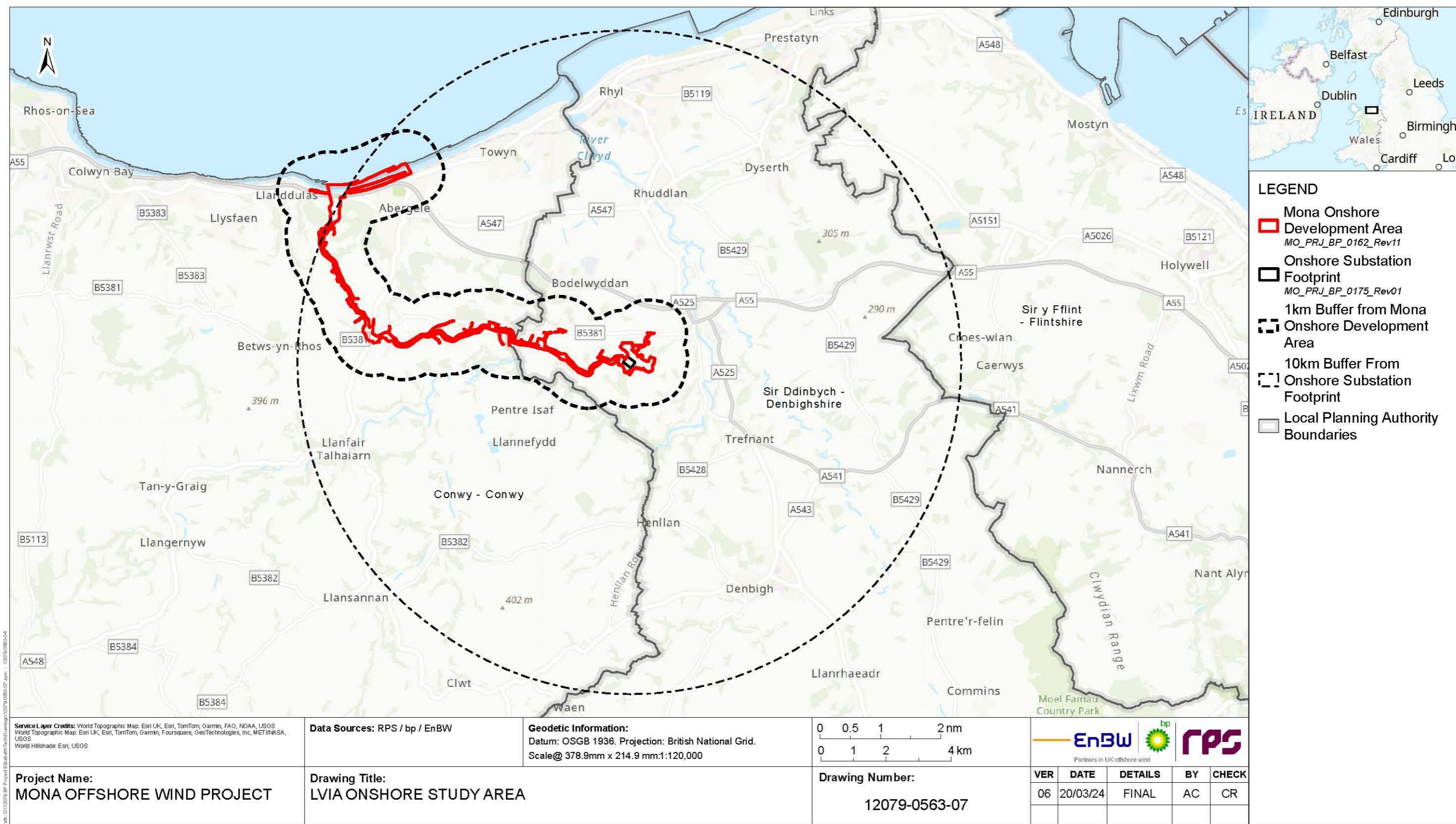


Figure 1.54: Figure A1 of Volume 7, Annex 6.4: Landscape, seascape and visual impact assessment methodology (APP-156).

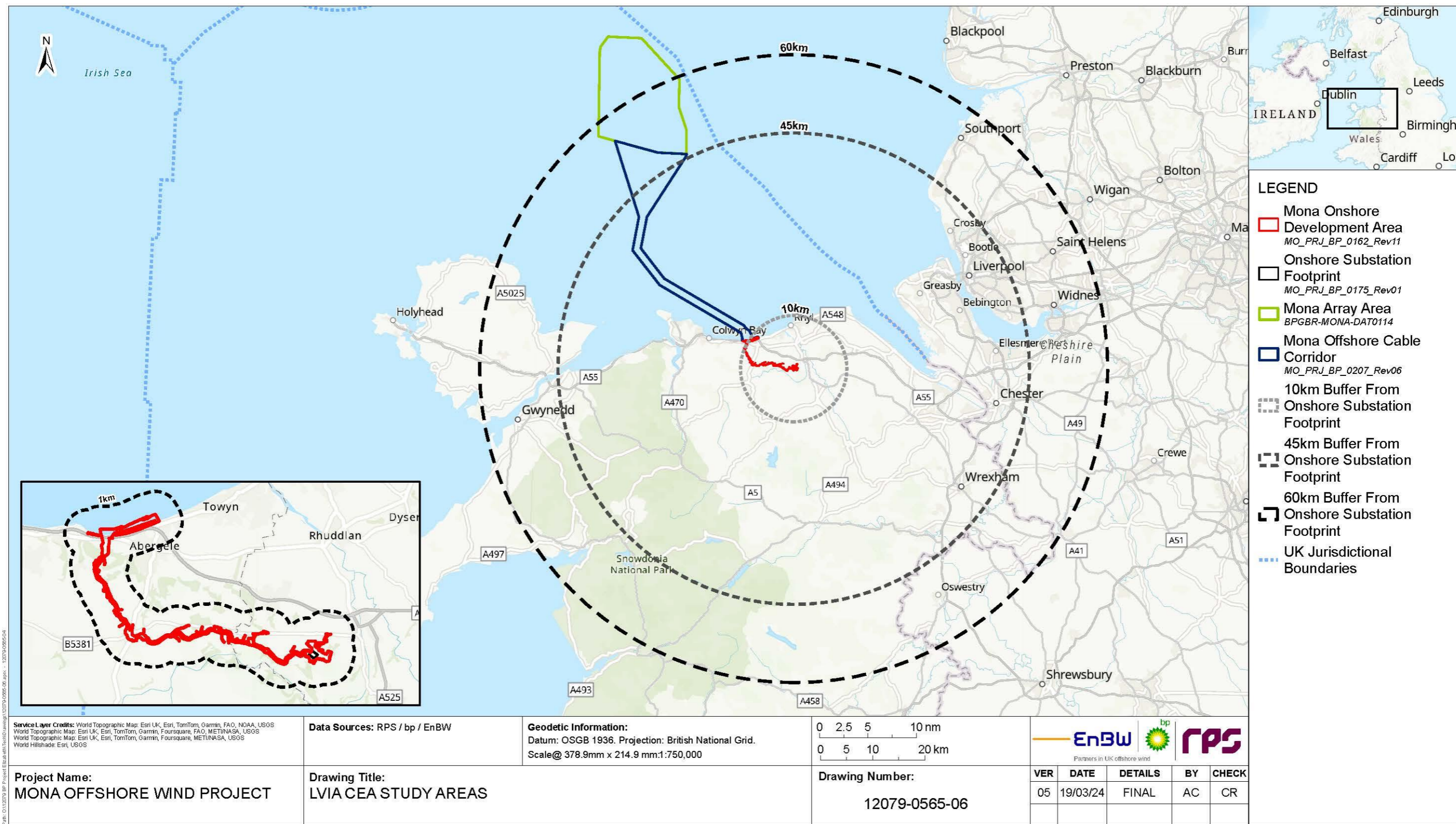


Figure 1.55: Figure A2 of Volume 7, Annex 6.4: Landscape, seascape and visual impact assessment methodology (APP-156).